

CDSCOPE2000 INSTALLATION MANUAL

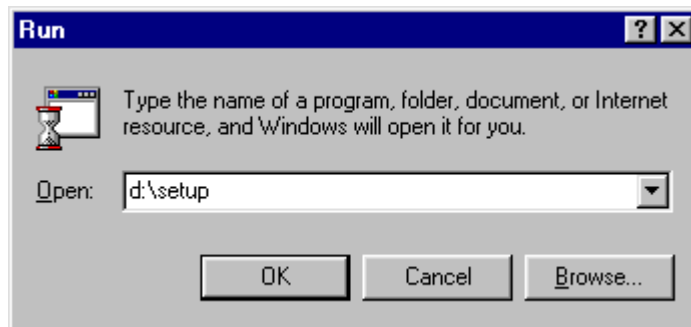
Complete the following steps to install CDSCOPE2000. It is better not to have any programs open when installing the software (mostly so you can restart when it's finished without risking any data loss). For best performance, we recommend a Pentium II 300 with 64Mb RAM or better.

Note: CDSCOPE2000 requires a minimum screen resolution of 800 x 600 pixels –

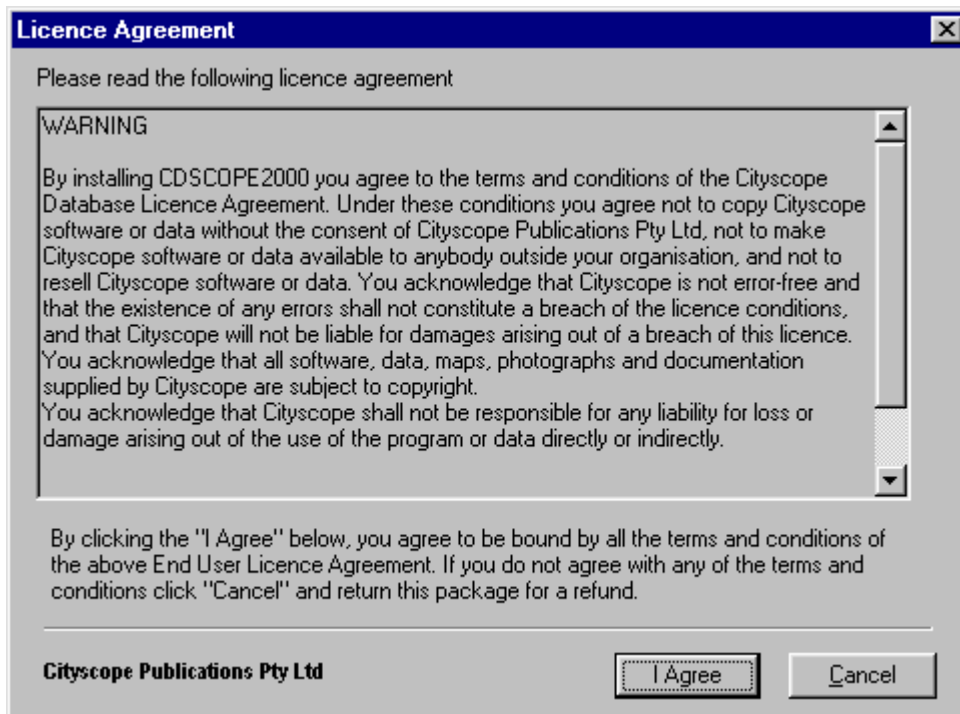
See end of document



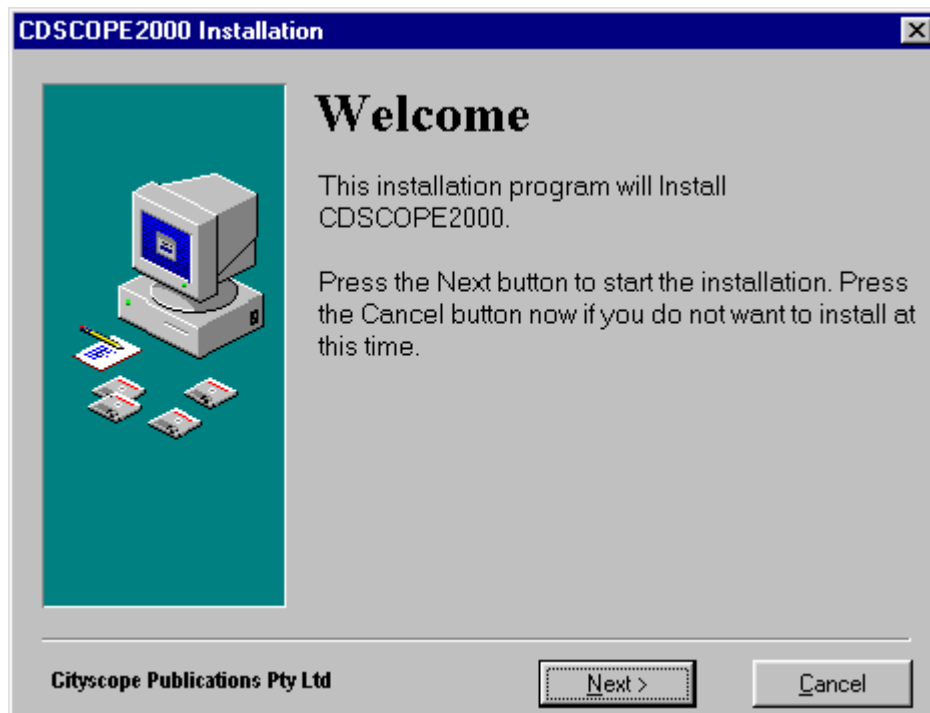
To begin setup, click the *Start* button and then *Run*.



This window will appear. Type in *d:\setup* as shown (where *d* is the letter of your CD-ROM drive).



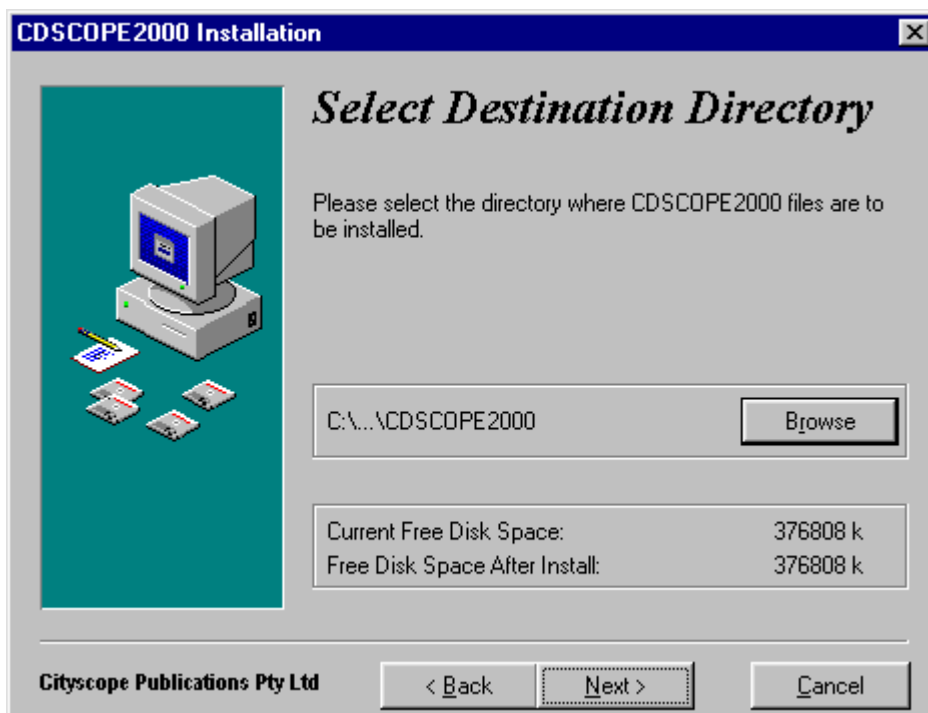
The first window is the licence agreement. Read the terms and conditions and then make your decision by clicking on *I Agree* or *Cancel*.



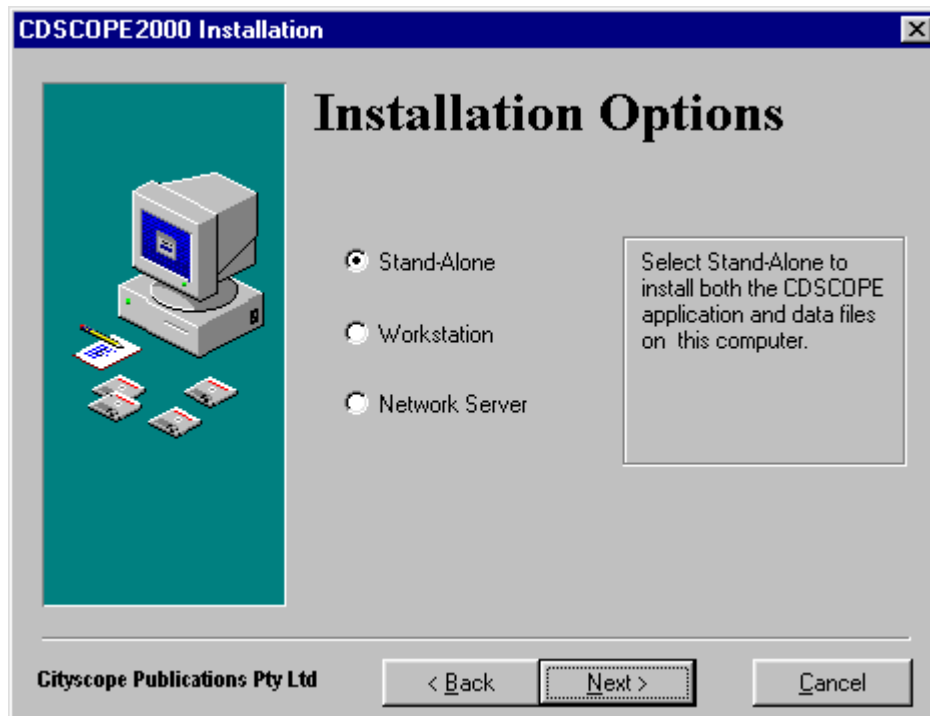
Press *Next* to begin installation.



In the *Username* field, type in your name (this field must be entered). In the *Company* field, type in your company name (if any). In the *CD-Key* field, type in the CD-Key number from the back of your CD case. If you have lost this number, please contact our IT department on:
 (07) 5596 4799 or helpdesk@cityscope.com.au



The default directory for CDSCOPE2000 files is `c:\Program Files\CDSCOPE2000\`. If you would prefer to install them to another directory or drive, click *Browse* to select another location.



This is where you choose what type of installation you want.

Select *Stand-Alone* if you want to install the CDScope2000 program AND all of the Cityscope data on one PC.

Select *Workstation* to only install the program (ie: you will be accessing the data from another "Network Server" PC).

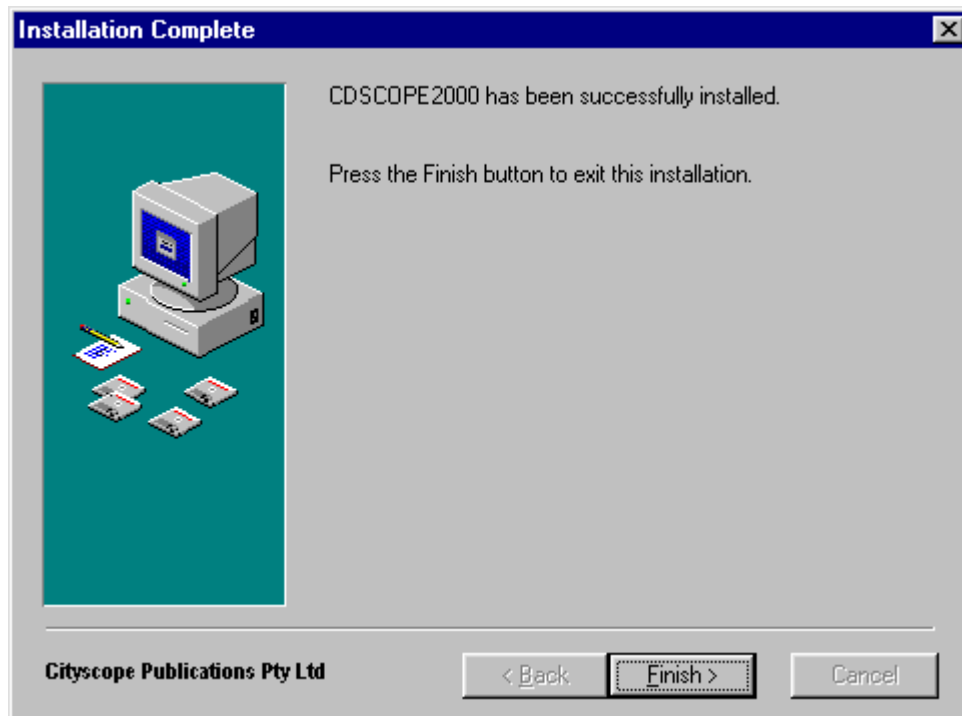
Select *Network Server* to only install the Cityscope data (ie: for other "Workstation" PCs to access).

Note: If you want to be able to run CDScope2000 from your Network Server, complete a Stand-Alone installation on the Network Server PC.

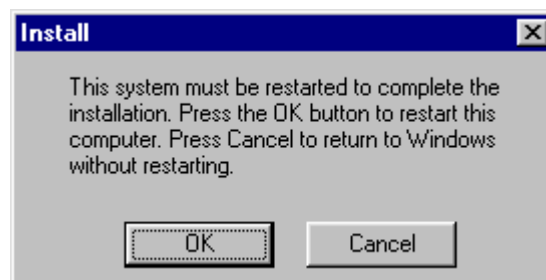


CDScope2000 has now gathered enough information to commence installation. Click *Next* to begin.

CDScope2000 will begin installing files. If you are doing a *Stand-Alone* or *Network Server* installation, do not be alarmed by the large amount of files you see rolling past. Most are very small. The Windows estimate to completion will be an **underestimate**.



Click *Finish*.



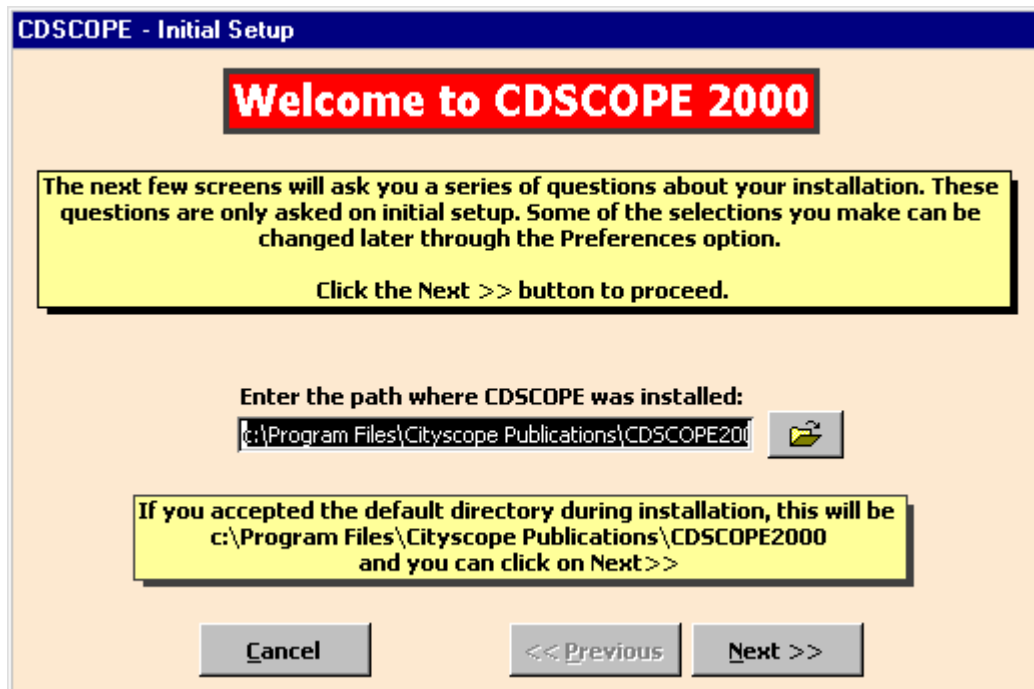
Press *OK* to restart windows with CDSCOPE2000 installed.

Once windows restarts, you will notice that there is a new icon on your desktop for CDSCOPE2000. You can start CDSCOPE2000 by double-clicking this icon, or by navigating to it through your Start menu, ie:

Start > Programs > Cityscope Publications > CDSCOPE2000

Note: If you have lots of applications installed on your computer, you may have to scroll down your *Programs* list, as CDSCOPE2000 may be at the bottom. It is possible to arrange your program folders alphabetically. To do this, right-click in your *Programs* list, and then click *Sort by Name*.

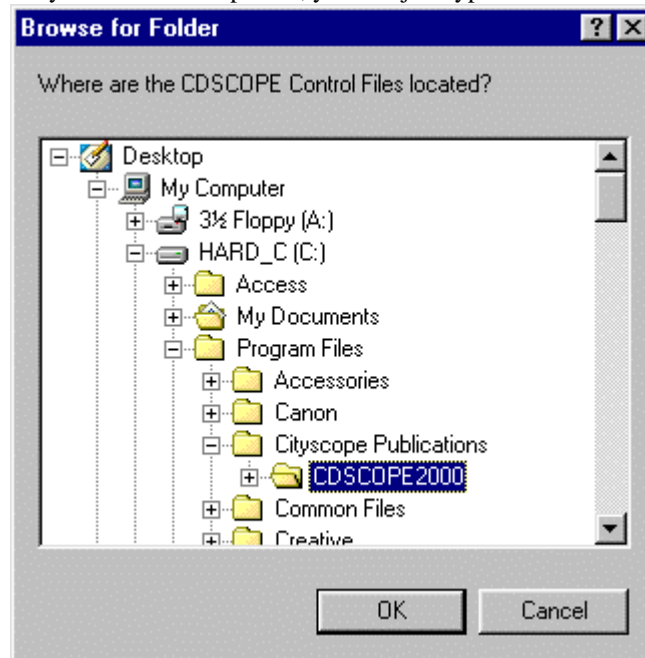
The following steps will only need to be done when you set up Cityscope for the first time.



This step is done to tell the CDScope2000 program where the control files are. Control files tell the CDScope2000 program who the user is, what they subscribe to, and for how long.

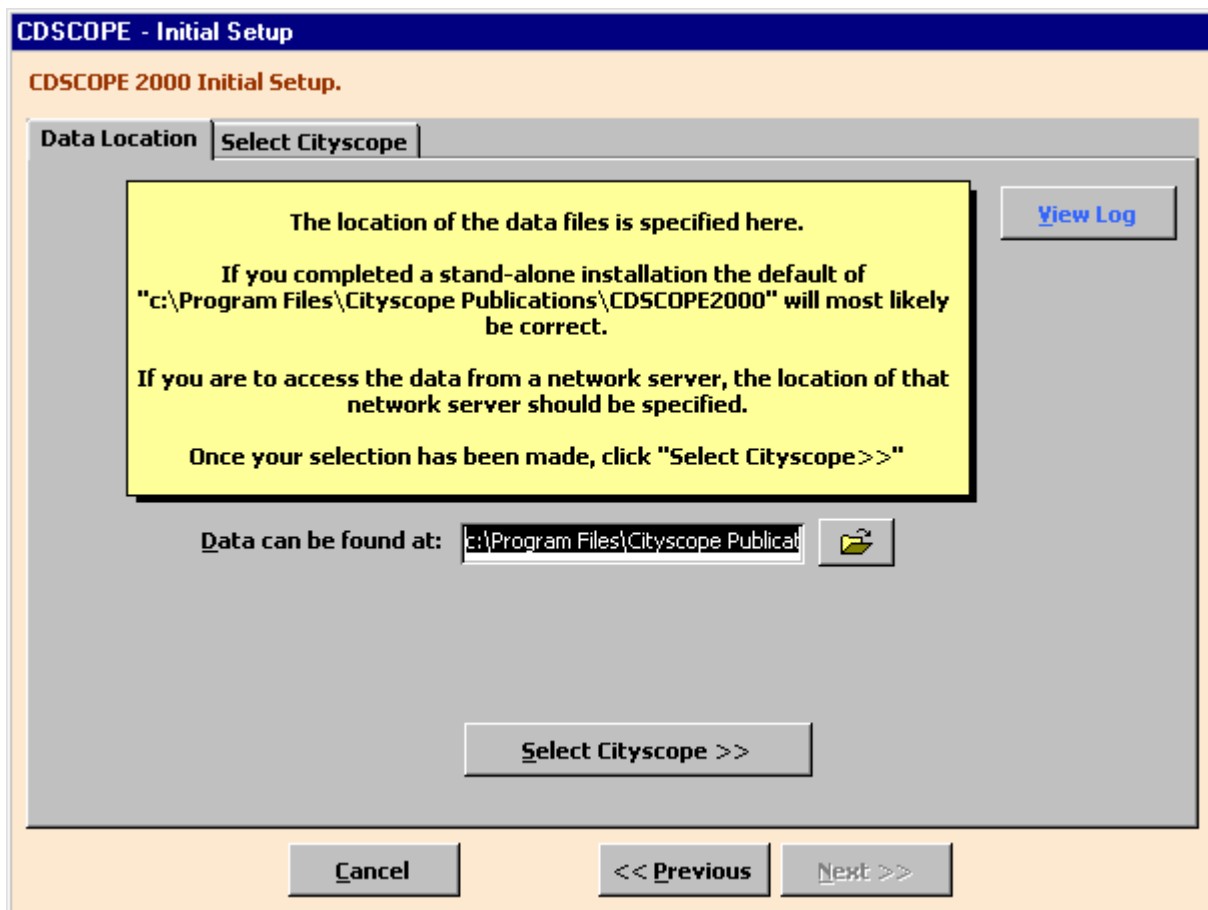
If you accepted the default directory during installation, just click *Next*. If you chose another directory to install to, click the browse button (little yellow folder) and navigate to the location where the control files are installed.

Note: If you already know what the path is, you can just type it in rather than navigate to it.



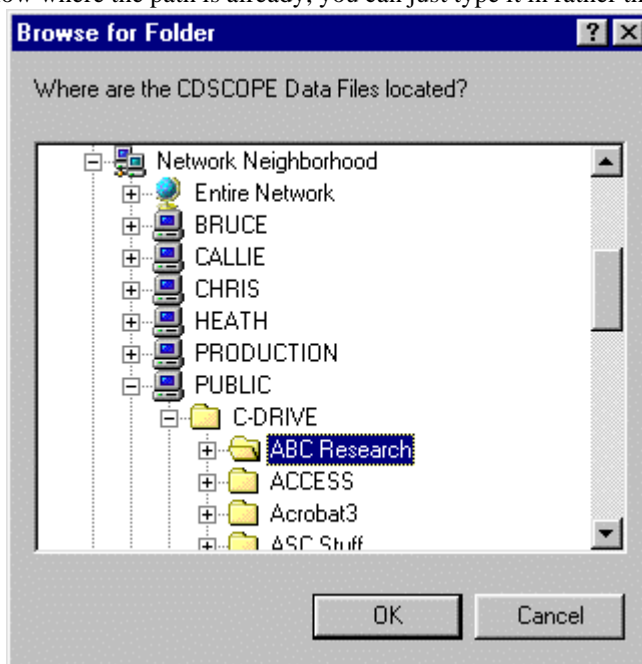
Please note that this is only a sample image and that the location you chose during installation may be completely different.

After you have selected your directory from the browse window, click *Next*.



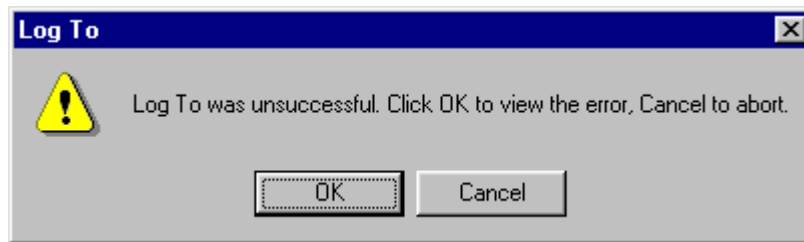
This step is done to tell the CDSCOPE2000 program where all the Cityscope data is stored. If you did a *Workstation* installation, you will have to change the path where CDSCOPE2000 was installed to make it “point” to the "Network Server" computer (where the Cityscope data is located). To do this, click on the browse icon (little yellow folder) and navigate to the appropriate computer location.

Note: If you know where the path is already, you can just type it in rather than navigate to it.

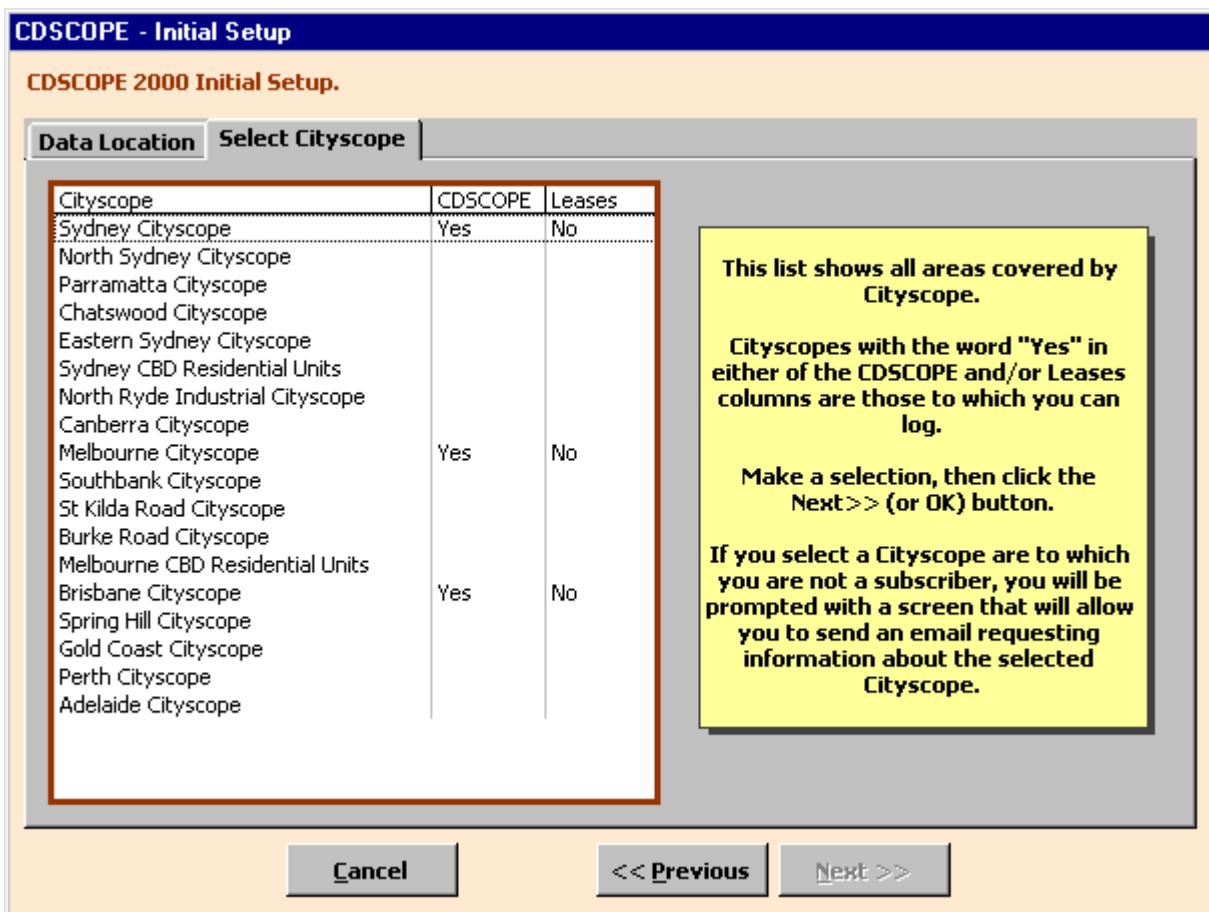


Please note that this is only a sample image and that the location you chose during installation may be completely different.

After you have clicked *OK* to select your directory from the browse window, press the *Select Cityscope* button (not the tab).

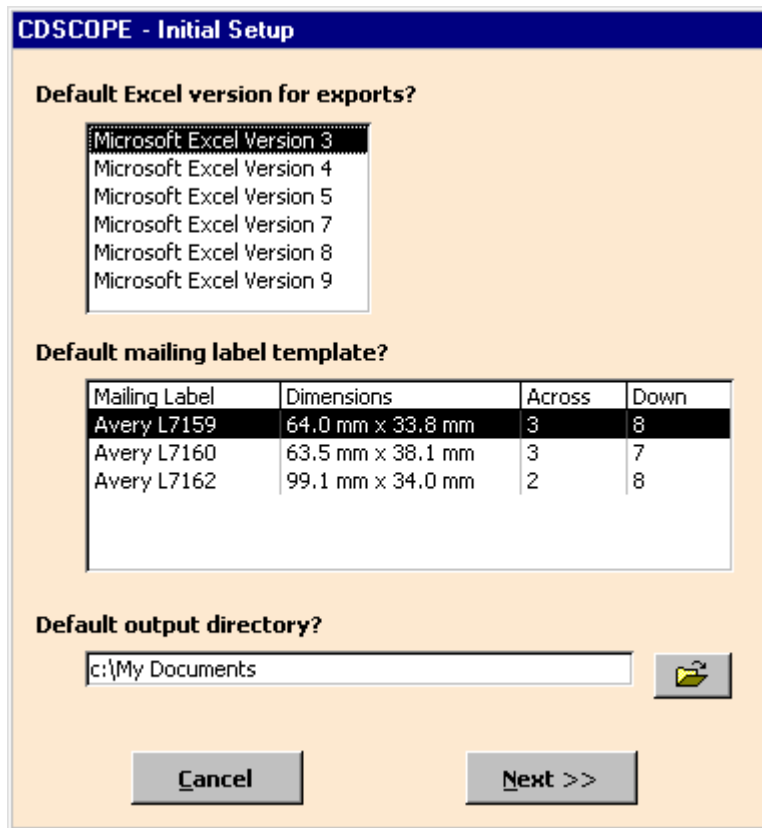


If after choosing your directory, you are presented with this message; it means that the directory you chose does not contain the Cityscope data. If you are positive that this is the correct location, click *OK* and send a message to our helpdesk; otherwise, click *Cancel* and try again.



A complete list of available Cityscopes will now be displayed, indicating which scopes you subscribe to with the word *Yes*. Click on one of the scopes and click *Next*.

Note: If you do not subscribe to the Cityscope you have selected, a window will pop up displaying our contact details and ordering information.



The next window allows you to select default options for exporting and creating labels (and where exported files will be saved). These options may be changed later at any time. Make your selections and click *Next*.

====!! FINISHED !!====

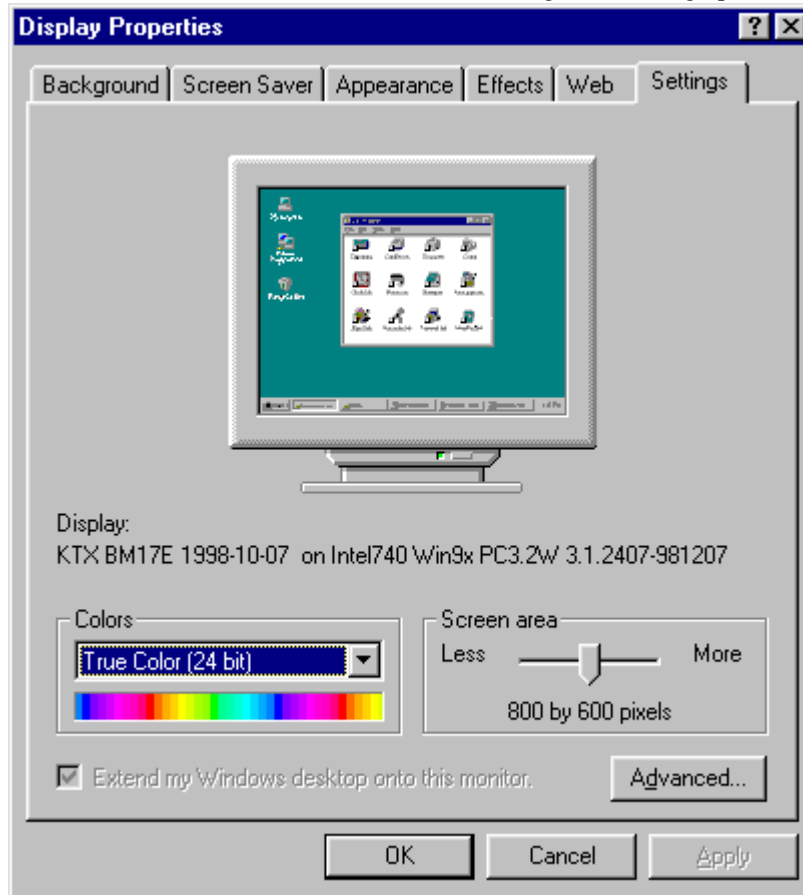
CDSCOPE2000 will open presenting you with the “top-level” key map for the Cityscope you selected.

CDSCOPE2000 REQUIRES A MINIMUM SCREEN RESOLUTION OF 800 x 600 PIXELS

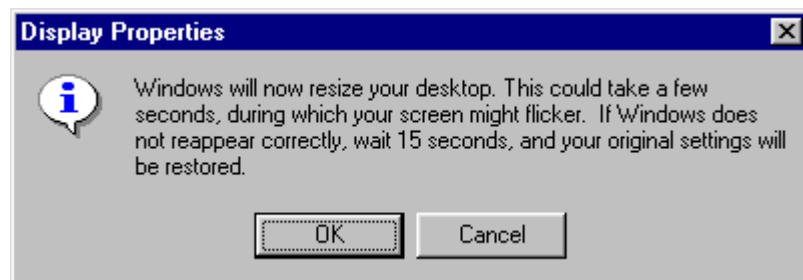
Your screen resolution can be changed from your *Display Settings*. To view your *Display Settings*, click:
Start > Settings > Control Panel



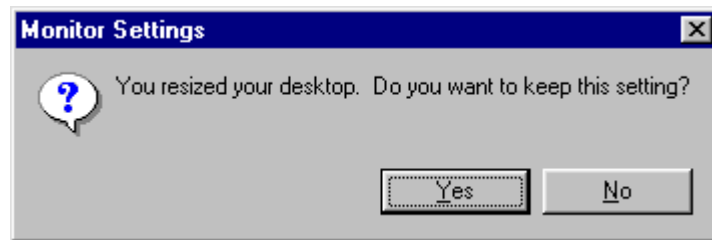
Double-click the *Display* button, and then select the settings tab to bring up this window:



Click and drag the *Screen Area (or similar)* slider to indicate a setting of 800 x 600 pixels.
 Note: Some computers have two separate sliders. In this case, drag both of them to indicate 800 x 600 pixels.
 Click *OK*.



Some computers may display this message to which you click *OK*. Others skip this message and go straight on to the next one.



Click yes to confirm that you want to keep this setting.

Your display settings have now been changed to 800 x 600 pixels. Doing this allows you to fit much more information on your screen at once. If you have any trouble changing to this resolution, please give us a call on:

(07) 5596 1438

or send an email to: helpdesk@cityscope.com.au